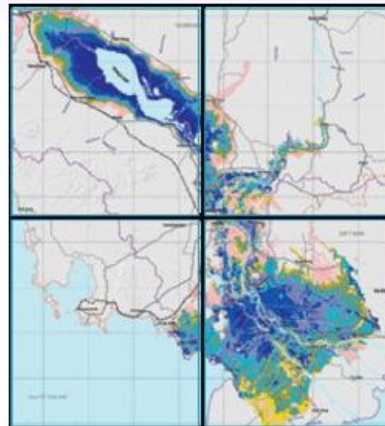


Welcome

The MRC Toolbox is a state-of-the-art computer based system aimed at providing the Mekong River Commission (MRC) with the capability to investigate the environmental and socio-economic impacts of changes in the quantity and the quality of flows in the Lower Mekong river system brought about by changing circumstances within the river basin.



The Toolbox is designed to facilitate access to and use of the data, information and decision support tools necessary to promote and co-ordinate sustainable development of water and related resources in the Mekong Basin.

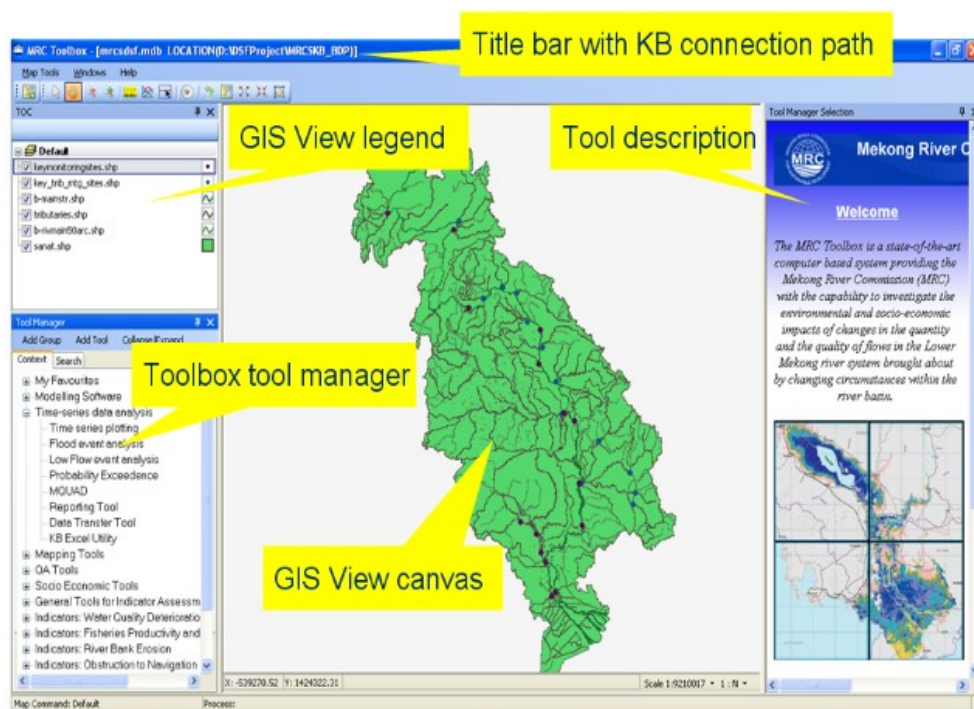
The main components of the Toolbox are:

- A **Knowledge Base**: Databases containing time series datasets, GIS datasets, models and other miscellaneous data (e.g. reports) plus associated metadata
- A **GIS Viewer** capable of showing a wide range of standard GIS formats plus the capability to search KB time series data by location, and
- A **Toolbox Manager** that holds a list of available tools together with a description of each tool and enables the user to select and run these tools

The Toolbox is effectively an “empty box” other than enabling data viewing it requires tools to be added to provide functionality. These are standalone, separate software.

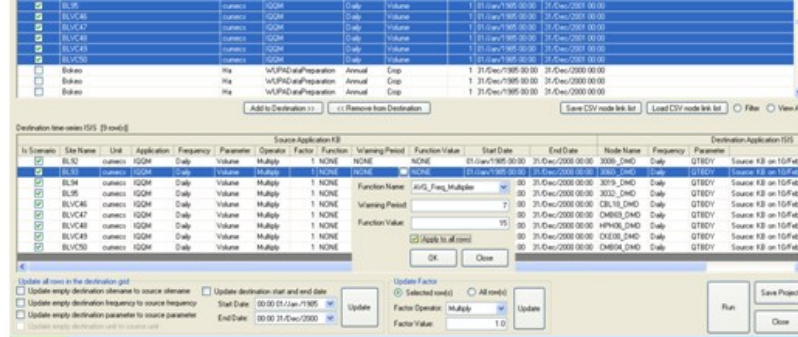
The Toolbox contains the following new tools:

- **Main Interface** – A GIS based interface that enables users to search for available (georeferenced) datasets by map location. Time series data located using the available search tools can be plotted on screen or passed to other analysis tools. This main interface also provides the links to all other Toolbox tools (via the Tool Manager)

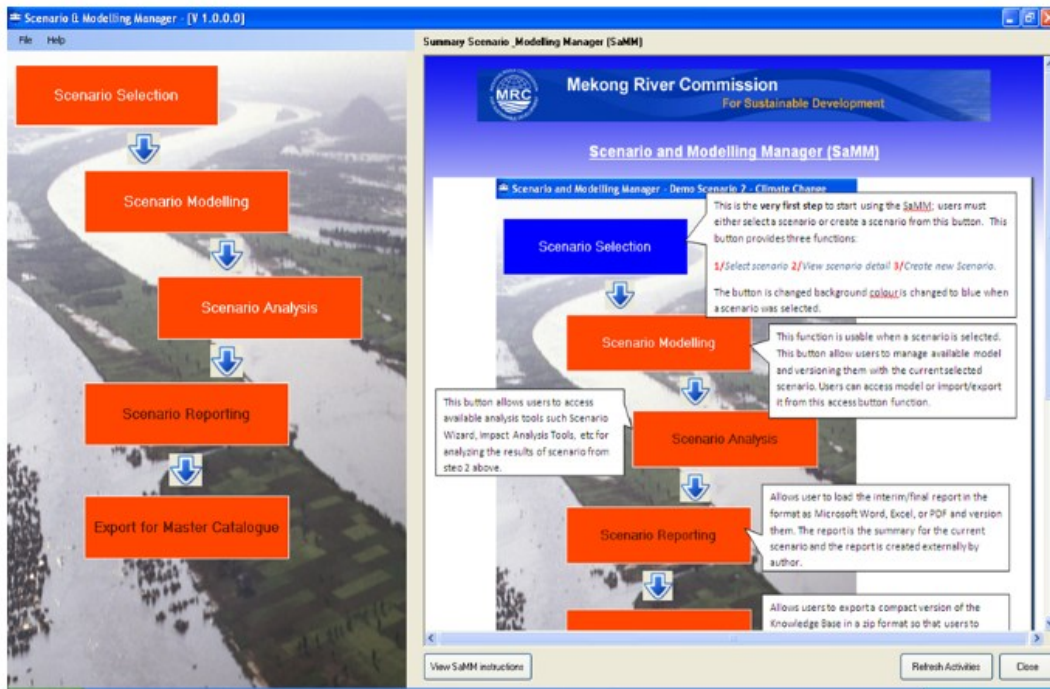


- **Data Transfer Tool (DTT)** – to move time series datasets quickly and easily between standard formats such as input and output formats of standard modelling packages (this tool is designed mainly for expert modellers)





- **KB Manager** – to manage the associated Knowledge Base to your Toolbox. Functionality includes importing, editing, deleting and exporting of KB data, the ability to back up your KB (and restore from back up) and to edit the list of registered users (e.g. add new users).
- **Scenario and Model Management Tool (SAMM)** – to manage the work done for development scenarios and to manage the development of multiple versions of the same model (to accommodate enhancements or different scenarios). The main purpose of this tool is to ensure a record is automatically generated for all work done to develop new scenarios or simulation models. This can then help the checking and validation of work for quality assurance purposes.



- **CopyKB tool** – a tool to copy a KB to a new location, ensuring all required paths within the KB are updated to reflect the new location. The tool also automatically sets up the operator as an Administrator of the new KB copy.
- **KB Excel Utility** – a tool that is embedded into the toolbar of Microsoft Excel, providing a direct link to your Knowledge Base. This enables time series datasets to be downloaded directly from your KB into a spreadsheet (ready for further analysis).

In addition to the above listed new tools, the Toolbox includes standalone versions of the following DSF impact analysis tools:

- Time series plotting tool
- Flood event analysis tool
- Low flow event analysis tool
- Probability exceedence tool
- MQUAD
- Reporting Tool

Finally, the Toolbox Tool Manager has been set up to include links to some commercial packages commonly used for data analysis

- Modelling software: SWAT, IQQM, ISIS, SYKE DMS, HEC-ResSim, etc
- Standard data analysis tools: Excel, ArcMap, ISIS Mapper, etc

It should be noted that not all of these may be available to you as they are not part of the Toolbox installation. In order for the defined Toolbox links to work, they require you to have also installed the necessary commercial packages in their default locations. If your packages exist elsewhere or you do not have them then you can remove the references to these tools by using the editing facility in the Toolbox Tool Manager. Equally this functionality can be used to add new extra tools of your own choosing to produce your own custom version of the Toolbox (full instructions on how to do this are provided in the Help documentation).

